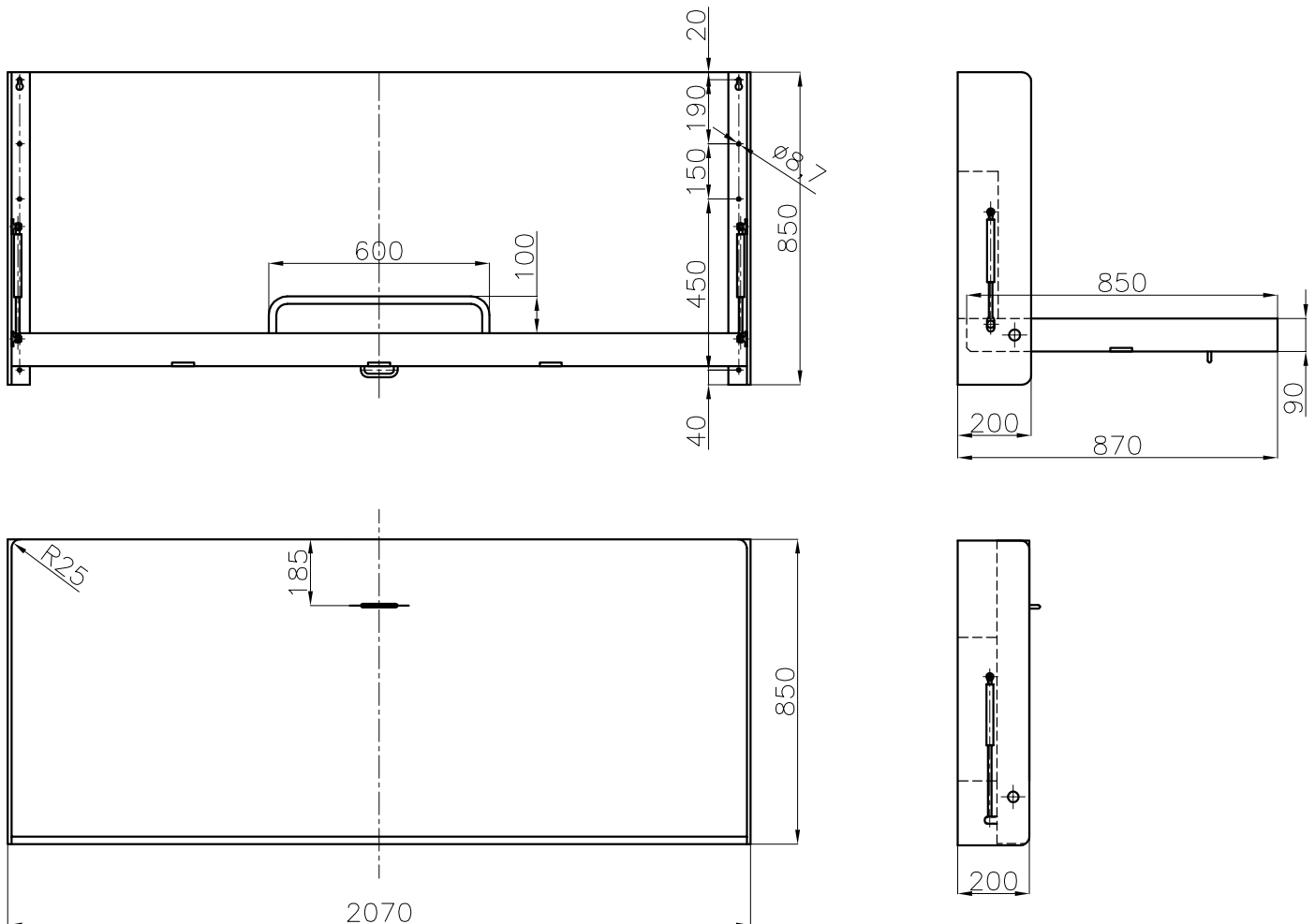


PULLMAN-BED

- made of galvanized steel 1,25mm thick
- alternatively made of alu
- with integrated mattress ventilation
- with gaspressure springs
- one safety bracket on the front side
- with 2 stretch belts for holding the bed sheets
- 2 mounting profiles 200x50mm for fastening to wall
- for mattress size 2000x800mm (but without mattress)

Powderpainted: RAL 9002
Weight: appr. XX Kg

Delivery: assembled



WETCAB <i>Trading</i> <small>S.p. z o.o.</small>	Project:
	Description: PULLMAN BED-STEEL
Drawn by: M. Kazmierski	Drawing No.: 009